

**ADOPTION NOTICE**

SAE-AS1002, "TEE, STANDARD AND REDUCER, BULKHEAD AND INTERNAL PORT ON RUN, FLARELESS TUBE", was adopted on 16-AUG-87 for use by the Department of Defense (DoD). Proposed changes by DoD activities must be submitted to the DoD Adopting Activity: Commander, Naval Air Warfare Center, Aircraft Division, Code 414100B120-3, Highway 547, Lakehurst, NJ 08733-5100. Copies of this document may be purchased from the Society of Automotive Engineers 400 Commonwealth Drive Warrendale, Pennsylvania, United States, 15096-0001. <http://www.sae.org/>

**Custodians:**

Army - AV  
Navy - AS  
Air Force - 99

**Adopting Activity:**

Navy - AS

**Reviewer Activities:**

Air Force - 82  
DLA - CC

**FSC 4730**

**DISTRIBUTION STATEMENT A:** Approved for public release; distribution is unlimited.

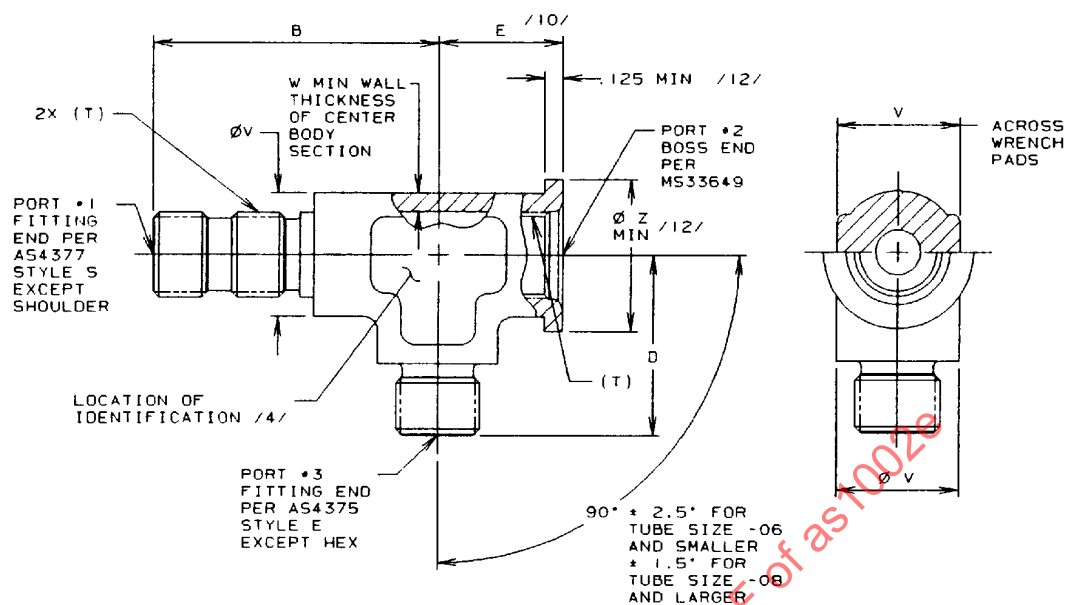


FIGURE 1 - TEE, PORT #2 SHOWN AS NONREDUCER

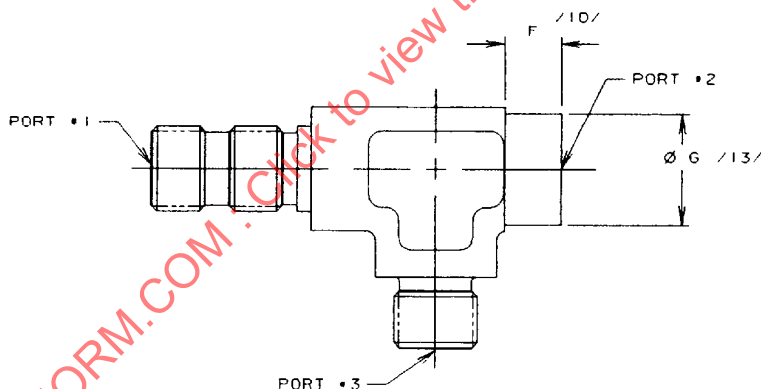
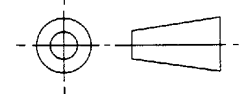


FIGURE 2 - TEE, PORT #2 SHOWN AS REDUCER

### THIRD ANGLE PROJECTION



CUSTODIAN: SAE G-3/G-3B

PROCUREMENT SPECIFICATION: /3/ MIL-F-18280



# AEROSPACE STANDARD

TEE, STANDARD AND REDUCER,  
BULKHEAD AND INTERNAL PORT ON RUN,  
FLARELESS TUBE

**AS1002**  
SHEET 1 OF 5

**REV.**  
**E**

SAE Technical Standards Board Rules provide that: "This report is published by SAE to advance the state of technical and engineering sciences. The use of this report is entirely voluntary, and its applicability and suitability for any particular use, including any patent infringement arising therefrom, is the sole responsibility of the user." SAE reviews each technical report at least every five years at which time it may be reaffirmed, revised, or cancelled. SAE invites your written comments and suggestions.

SSUED 1966-03-15	REVISED 1993-08-12 (E)
------------------	------------------------

Copyright 1993 by Society of Automotive Engineers, Inc.  
All rights reserved.

Printed in the U.S.A.  
90-1001B/EG

REV.  
E

AS1002

TABLE 1 - DIMENSIONS AND WEIGHTS

BASIC NO. AS1002 /11/ /19/ SIZE CODE	E /10/	F /10/	V	W	Z /12/	LB/EA MAX ALUM	LB/EA MAX CRES	LB/EA MAX TI
02	.648	---	.500	.090	.562	.018	.051	.029
03	.711	---	.562	.100	.625	.039	.105	.060
04	.773	.375	.750	.110	--	.067	.206	.118
05	.773	.375	.750	.120	.750	.075	.230	.132
06	.836	.375	.875	.120	---	.112	.283	.163
08	1.023	.469	1.062	.150	---	.148	.360	.207
10	1.180	.625	1.062	.170	1.125	.179	.450	.259
12	1.367	.688	1.312	.185	1.375	.284	.850	.490
14	1.507	.706	1.562	.200	---	---	---	---
16	1.555	.719	1.625	.205	1.625	.410	1.100	.634
20	1.742	.781	1.875	.240	1.938	.600	1.540	.888

TABLE 2 - LEG LENGTH B

SIZE OF PORT #1	FORGING SIZE /11/ 02	FORGING SIZE /11/ 03	FORGING SIZE /11/ 04	FORGING SIZE /11/ 05	FORGING SIZE /11/ 06	FORGING SIZE /11/ 08	FORGING SIZE /11/ 10	FORGING SIZE /11/ 12	FORGING SIZE /11/ 14	FORGING SIZE /11/ 16	FORGING SIZE /11/ 20
02	1.398	1.430	1.585	1.585	1.758	1.727	1.804	1.883	2.040	2.102	2.242
03	---	1.477	1.632	1.632	1.805	1.774	1.851	1.930	2.087	2.149	2.289
04	---	---	1.695	1.695	1.868	1.837	1.914	1.993	2.150	2.212	2.352
05	---	---	---	1.695	1.868	1.837	1.914	1.993	2.150	2.212	2.352
06	---	---	---	---	1.914	1.883	1.960	2.039	2.196	2.258	2.398
08	---	---	---	---	---	2.055	2.132	2.211	2.368	2.430	2.570
10	---	---	---	---	---	---	2.273	2.352	2.509	2.571	2.711
12	---	---	---	---	---	---	---	2.461	2.618	2.680	2.820
14	---	---	---	---	---	---	---	---	2.618	2.680	2.820
16	---	---	---	---	---	---	---	---	---	2.680	2.820
20	---	---	---	---	---	---	---	---	---	---	2.820

TABLE 3 - LEG LENGTH D

SIZE OF PORT #2	FORGING SIZE /11/ 02	FORGING SIZE /11/ 03	FORGING SIZE /11/ 04	FORGING SIZE /11/ 05	FORGING SIZE /11/ 06	FORGING SIZE /11/ 08	FORGING SIZE /11/ 10	FORGING SIZE /11/ 12	FORGING SIZE /11/ 14	FORGING SIZE /11/ 16	FORGING SIZE /11/ 20
02	.867	.883	1.039	1.039	1.086	1.180	1.273	1.351	1.492	1.554	1.695
03	---	.930	1.086	1.086	1.133	1.227	1.320	1.398	1.593	1.601	1.742
04	---	---	1.117	1.117	1.164	1.258	1.351	1.429	1.570	1.632	1.773
05	---	---	---	1.117	1.164	1.258	1.351	1.429	1.570	1.632	1.773
06	---	---	---	---	1.180	1.274	1.367	1.445	1.586	1.648	1.789
08	---	---	---	---	---	1.367	1.460	1.538	1.679	1.741	1.882
10	---	---	---	---	---	---	1.523	1.601	1.724	1.804	1.945
12	---	---	---	---	---	---	---	1.664	1.867	1.867	2.008
14	---	---	---	---	---	---	---	---	1.867	1.867	2.008
16	---	---	---	---	---	---	---	---	---	1.867	2.008
20	---	---	---	---	---	---	---	---	---	---	2.008

TABLE 4 - TURNED DIA G /13/

SIZE OF PORT #1	FORGING SIZE /11/ 03	FORGING SIZE /11/ 04	FORGING SIZE /11/ 05	FORGING SIZE /11/ 06	FORGING SIZE /11/ 08	FORGING SIZE /11/ 10	FORGING SIZE /11/ 12	FORGING SIZE /11/ 14	FORGING SIZE /11/ 16	FORGING SIZE /11/ 20
02	---	.594	.594	.594	.594	.594	.594	.594	.594	.594
03	---	.656	.656	.656	.656	.656	.656	.656	.656	.656
04	---	---	---	.719	.719	.719	.719	.719	.719	.719
05	---	---	---	.781	.781	.781	.781	.781	.781	.781
06	---	---	---	---	.844	.844	.844	.844	.844	.844
08	---	---	---	---	---	---	1.062	1.062	1.062	1.062
10	---	---	---	---	---	---	---	1.188	1.188	1.188
12	---	---	---	---	---	---	---	1.438	1.438	1.438
14	---	---	---	---	---	---	---	---	1.562	1.562
16	---	---	---	---	---	---	---	---	---	1.688