

SAE Technical Standards Board Rules provide that: "This report is published by SAE to advance the state of technical and engineering sciences. The use of this report is entirely voluntary, and its applicability and suitability for any particular use, including any patent infringement arising therefrom, is the sole responsibility of the user."

SAE reviews each technical report at least every five years at which time it may be revised, reaffirmed, stabilized, or cancelled. SAE invites your written comments and suggestions.

REV.
C

AS85049/50

FEDERAL SUPPLY CLASS
5935

RATIONALE

REVISION IS REQUIRED TO CORRECT THE "F" FINISH PLATING REFERENCE DOCUMENT, TO IMPROVE COMPONENT DRAWING LEGIBILITY, AND TO ADD METRIC EQUIVALENTS.

NOTICE

THE COMPLETE REQUIREMENTS FOR PROCURING THE PRODUCT DESCRIBED HEREIN SHALL CONSIST OF THIS DOCUMENT AND THE LATEST ISSUE OF AS85049.

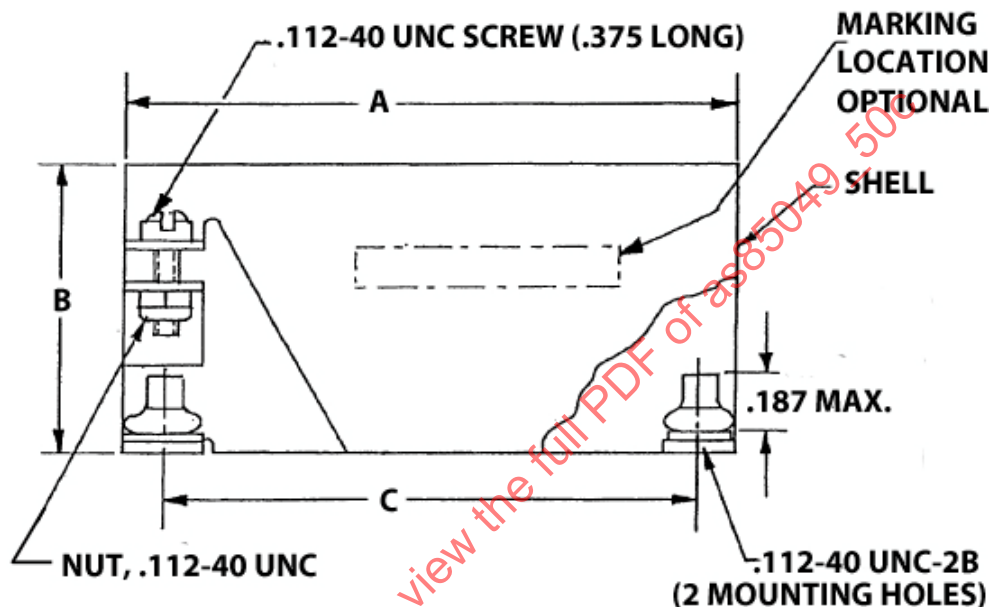
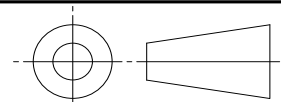


FIGURE 1 - ACCESSORY CONFIGURATIONS AND DIMENSIONS

SAE values your input. To provide feedback
on this Technical Report, please visit
http://www.sae.org/technical/standards/AS85049_50C

THIRD ANGLE PROJECTION



CUSTODIAN: AE-8/AE-8C1

PROCUREMENT SPECIFICATION: AS85049



AEROSPACE STANDARD

(R) CONNECTOR ACCESSORIES, ELECTRICAL, STRAIN
RELIEF, 90°, CATEGORY 4C
(FOR MIL-DTL-24308 CONNECTORS)

AS85049/50
SHEET 1 OF 4

REV.
C

Copyright 2014 SAE International
All rights reserved. No part of this publication may be reproduced, stored in a retrieval system or transmitted, in any form or by any means, electronic, mechanical, photocopying, recording, or otherwise, without the prior written permission of SAE.

TO PLACE A DOCUMENT ORDER: Tel: 877-606-7323 (inside USA and Canada)
Fax: 724-776-0790

Tel: +1 724-776-4970 (outside USA)
Email: CustomerService@sae.org

SAE WEB ADDRESS: <http://www.sae.org>

ISSUED 2000-05 REVISED 2014-12

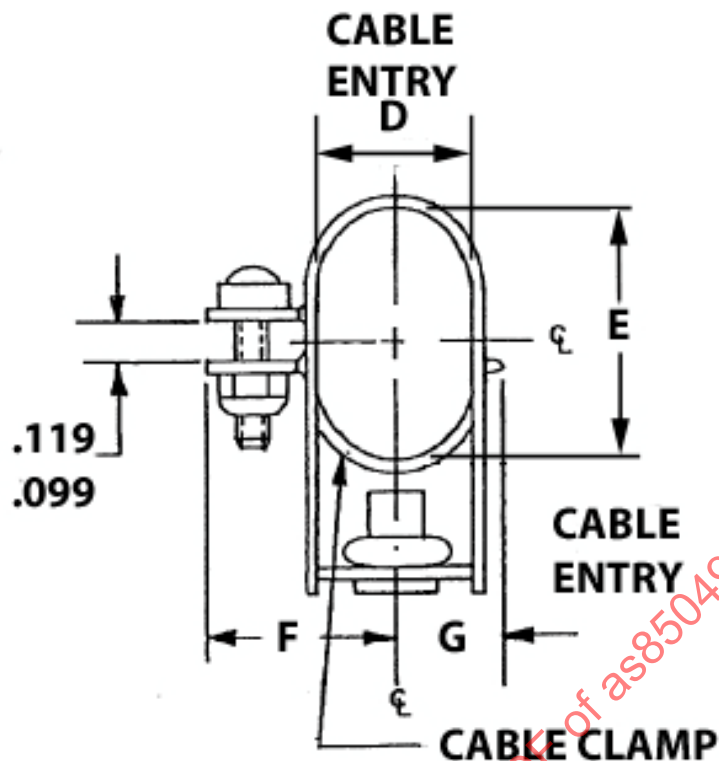


FIGURE 1A - ACCESSORY CONFIGURATIONS AND DIMENSIONS (CONTINUED)

TABLE 1 - FIGURE 1 METRIC EQUIVALENTS

INCHES	MILLIMETERS	INCHES	MILLIMETERS	INCHES	MILLIMETERS	INCHES	MILLIMETERS
.099	2.51	.119	3.02	.187	4.75	.375	9.53

TABLE 2 - FIGURE 1 DIMENSIONS

PART NUMBER		SHELL SIZE	A	B	C	D	E	F	G
STEEL	NONMAGNETIC (BRASS)								
M85049/50-1	M85049/50-6	1	1.218 (30.94) 1.188 (30.18)	.748 (19.00) .688 (17.48)	.989 (25.12) .979 (24.87)	.467 (11.86) .407 (10.34)	.467 (11.86) .407 (10.34)	.498 (12.65) .438 (11.13)	.311 (7.90) .251 (6.38)
M85049/50-2	M85049/50-7	2	1.546 (39.27) 1.516 (38.51)	.748 (19.00) .688 (17.48)	1.317 (33.45) 1.307 (33.20)	.467 (11.86) .407 (10.34)	.467 (11.86) .407 (10.34)	.498 (12.65) .438 (11.13)	.311 (7.90) .251 (6.38)
M85049/50-3	M85049/50-8	3	2.093 (53.16) 2.063 (52.40)	.998 (25.35) .938 (23.83)	1.857 (47.17) 1.847 (46.91)	.467 (11.86) .407 (10.34)	.655 (16.64) .595 (15.11)	.498 (12.65) .438 (11.13)	.311 (7.90) .251 (6.38)
M85049/50-4	M85049/50-9	4	2.733 (69.42) 2.703 (68.66)	1.217 (30.91) 1.157 (29.39)	2.505 (63.63) 2.495 (63.37)	.467 (11.86) .407 (10.34)	.842 (21.39) .782 (19.86)	.498 (12.65) .438 (11.13)	.311 (7.90) .251 (6.38)
M85049/50-5	M85049/50-10	5	2.640 (67.06) 2.610 (66.29)	1.280 (32.51) 1.220 (30.99)	2.411 (61.24) 2.401 (60.99)	.592 (15.04) .532 (13.51)	.936 (23.77) .876 (22.25)	.561 (14.25) .501 (12.73)	.373 (9.47) .313 (7.95)



AEROSPACE STANDARD

(R) CONNECTOR ACCESSORIES, ELECTRICAL, STRAIN
RELIEF, 90°, CATEGORY 4C
(FOR MIL-DTL-24308 CONNECTORS)

AS85049/50
SHEET 2 OF 4

REV.
C

REQUIREMENTS: ALL REQUIREMENTS SHALL CONSIST OF THIS DOCUMENT AND THE LATEST ISSUE OF AS85049.

1. DESIGN AND CONSTRUCTION:

THE ACCESSORY SHALL BE DESIGNED IN ACCORDANCE WITH FIGURE 1 AND TABLE 2. DIMENSIONS ARE IN INCHES AND APPLY AFTER PLATING. METRIC EQUIVALENTS ARE GIVEN FOR GENERAL INFORMATION ONLY AND ARE BASED ON 1 INCH = 25.4 MM.

2. SCREWS AND NUTS ARE SHOWN ASSEMBLED FOR REFERENCE ONLY AND ARE TO BE SHIPPED UNASSEMBLED IN A COMMON CONTAINER WITH THE ACCESSORY.
3. MATERIAL AND FINISH: SEE TABLE 3.

FINISH DESIGNATOR:

FINISH F - YELLOW CHROMATE OVER CADMIUM IN ACCORDANCE WITH AMS-QQ-P-416.

FINISH N - ELECTROLESS NICKEL IN ACCORDANCE WITH AS85049.

TABLE 3 - MATERIAL AND FINISH

DASH NUMBER	MATERIAL			FINISH	
	SHELL	CABLE CLAMP	SCREW/NUT 1/	SHELL/ CABLE CLAMP	SCREW/NUT
1 2 3 4 5	LOW CARBON SHEET STEEL	LOW CARBON SHEET STEEL SAE 1010 .024 THICK	STEEL 2/	F 3/	F 3/ 4/
1 2 3 4 5			300 SERIES CORROSION RESISTANT STEEL 5/	N	PASSIVATE
6 7 8 9 10	BRASS IN ACCORDANCE WITH ASTM B36 COMPOSITION C26000	BRASS IN ACCORDANCE WITH ASTM B36 COMPOSITION C26000, 1/2 HARD	BRASS 6/	F 3/	F 3/ 4/
6 7 8 9 10			300 SERIES CORROSION RESISTANT STEEL 5/	N 7/	PASSIVATE
1/ RIVNUTS (OR EQUIVALENT) SHALL BE ALUMINUM ALLOY IN ACCORDANCE WITH AS85049, BLACK ANODIZED IN ACCORDANCE WITH AS85049. 2/ STEEL NUTS FOR -3, -4, AND -5 SHALL BE MS21083N04 TYPE. 3/ CLASS F FINISH IS NOT FOR SPACE FLIGHT USE. 4/ CADMIUM PLATED SCREWS AND NUTS SHALL BE IN ACCORDANCE WITH AMS-QQ-P-416. 5/ CORROSION RESISTANT NUTS FOR -3, -4, -5, -8, -9, AND -10 SHALL BE MS21083C04 TYPE. 6/ BRASS NUTS FOR -8, -9, AND -10 SHALL BE MS21083B04 TYPE. 7/ CLASS N FINISH IS NOT FOR NAVY USE. AIR FORCE USE OF CLASS N FINISH IS FOR SPACE APPLICATIONS ONLY.					