

# SURFACE VEHICLE RECOMMENDED PRACTICE

**SAE** J1353

REV.  
APR95

Issued 1987-04  
Revised 1995-04

Superseding J1353 APR87

Submitted for recognition as an American National Standard

## (R) NOMENCLATURE—CLAM BUNK SKIDDER

**Foreword**—This Document has also changed to comply with the new SAE Technical Standards Board format.

1. **Scope**—This SAE Recommended Practice identifies major components and parts peculiar to clam bunk skidders. Illustrations used here are not intended to include all existing machines or to be exactly descriptive of any particular machine. They have been provided to illustrate the principles to be used in applying this document.

1.1 **Purpose**—The purpose of this document is to provide standardization of terms for major components of clam bunk skidders.

## 2. References

2.1 **Related Publication**—The following publication is provided for information purposes only and is not a required part of this document.

2.1.1 SAE PUBLICATION—Available from SAE, 400 Commonwealth Drive, Warrendale, PA 15096-0001.

SAE J1209—Identification—Terminology of Mobile Forestry Machines

## 3. Definitions

3.1 **Clam Bunk Skidder (Figures 1 and 2)**—A self-propelled machine designed to transport trees or parts of trees by trailing or dragging by using an integrally mounted grapple loader to assemble the load and clam or top-opening jaw to hold the load.

SAE Technical Standards Board Rules provide that: "This report is published by SAE to advance the state of technical and engineering sciences. The use of this report is entirely voluntary, and its applicability and suitability for any particular use, including any patent infringement arising therefrom, is the sole responsibility of the user."

SAE reviews each technical report at least every five years at which time it may be reaffirmed, revised, or cancelled. SAE invites your written comments and suggestions.

QUESTIONS REGARDING THIS DOCUMENT: (412) 772-8512 FAX: (412) 776-0243  
TO PLACE A DOCUMENT ORDER: (412) 776-4970 FAX: (412) 776-0790  
SAE WEB ADDRESS <http://www.sae.org>

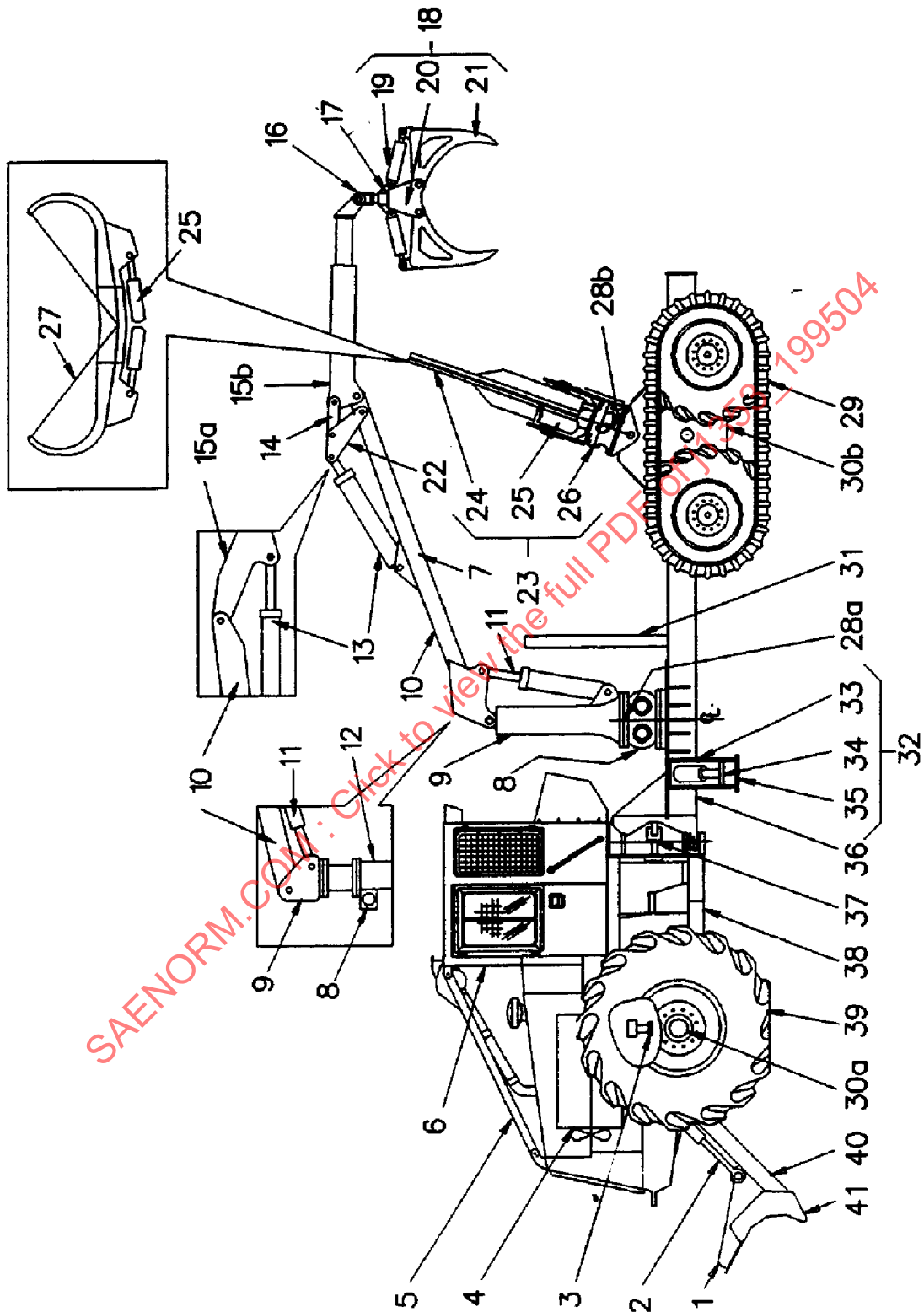


FIGURE 1—CLAM BUNK SKIDDER

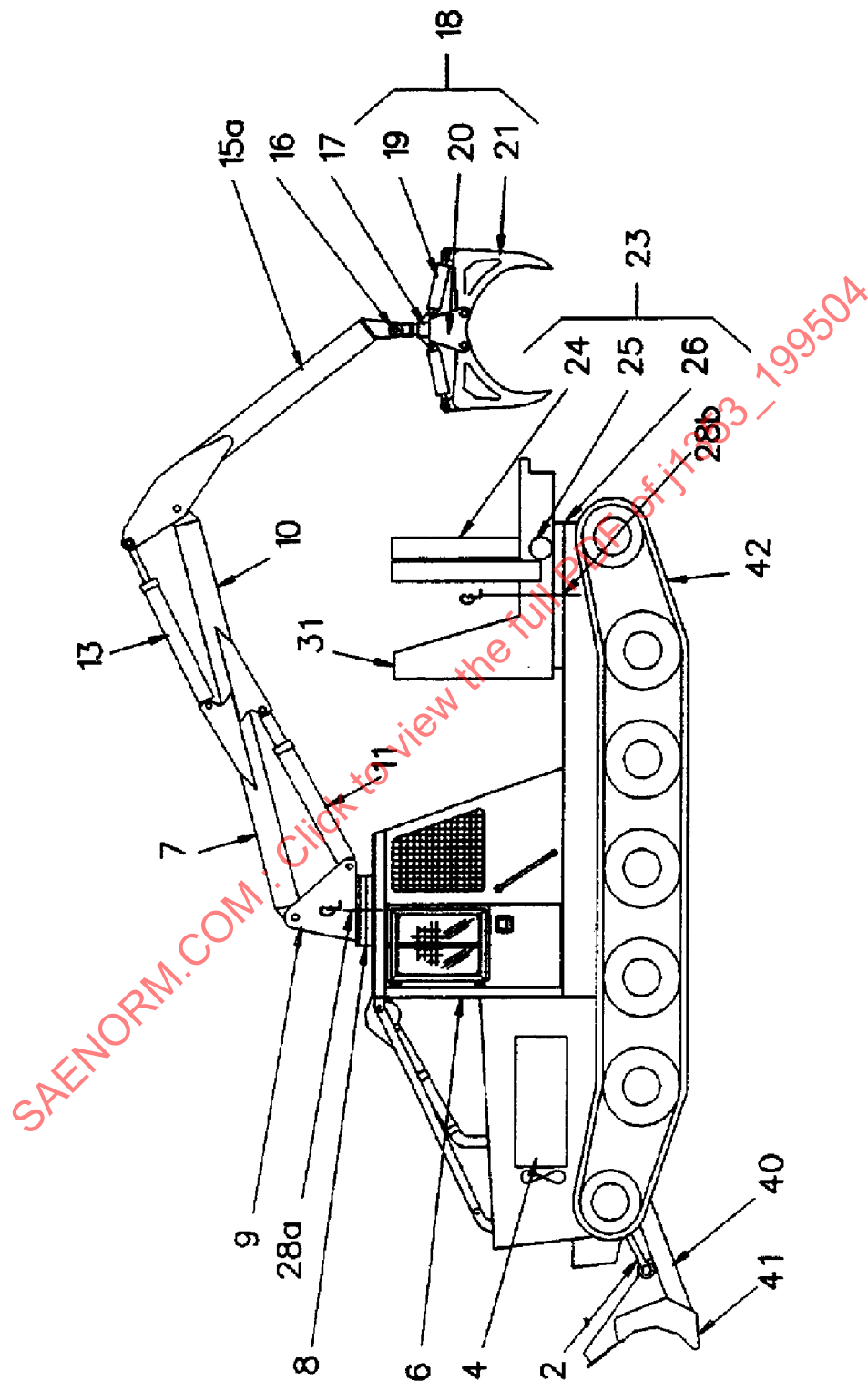


FIGURE 2—CLAM BUNK SKIDDER (CONTINUED)

#### 4. Nomenclature

1. Decking Lug
2. Blade Cylinder
3. Oscillation Lock (Axle or Frame Oscillation)
4. Engine
5. Sweep
6. Operator Enclosure
7. Loader Mechanism composed of items 8 through 22
8. Swing Assembly
9. Head
10. Main Boom
11. Main Boom Cylinder
12. Mast
13. Stick (Secondary) Boom Cylinder
14. Link
15. Stick (Secondary) Boom
  - a. Fixed
  - b. Telescopic
16. Grapple Yoke
17. Grapple Rotator Assembly
18. Grapple
19. Grapple Arm Cylinder
20. Grapple Head
21. Grapple Arm
22. Lever
23. Clam Bunk
24. Clam Arm
25. Clam Arm Cylinder
26. Clam Swivel
27. Load Restraining Cables
28. Axis of Rotation
  - a. Loader
  - b. Clam Bunk
29. Bogie Track
30. Axle
  - a. Single
  - b. Bogie
31. Headboard
32. Stabilizer
33. Stabilizer Arm
34. Stabilizer Cylinder
35. Stabilizer Pad
36. Rear Frame
37. Steering Cylinder
38. Front Frame
39. Tire
40. Blade Arm
41. Blade
42. Undercarriage